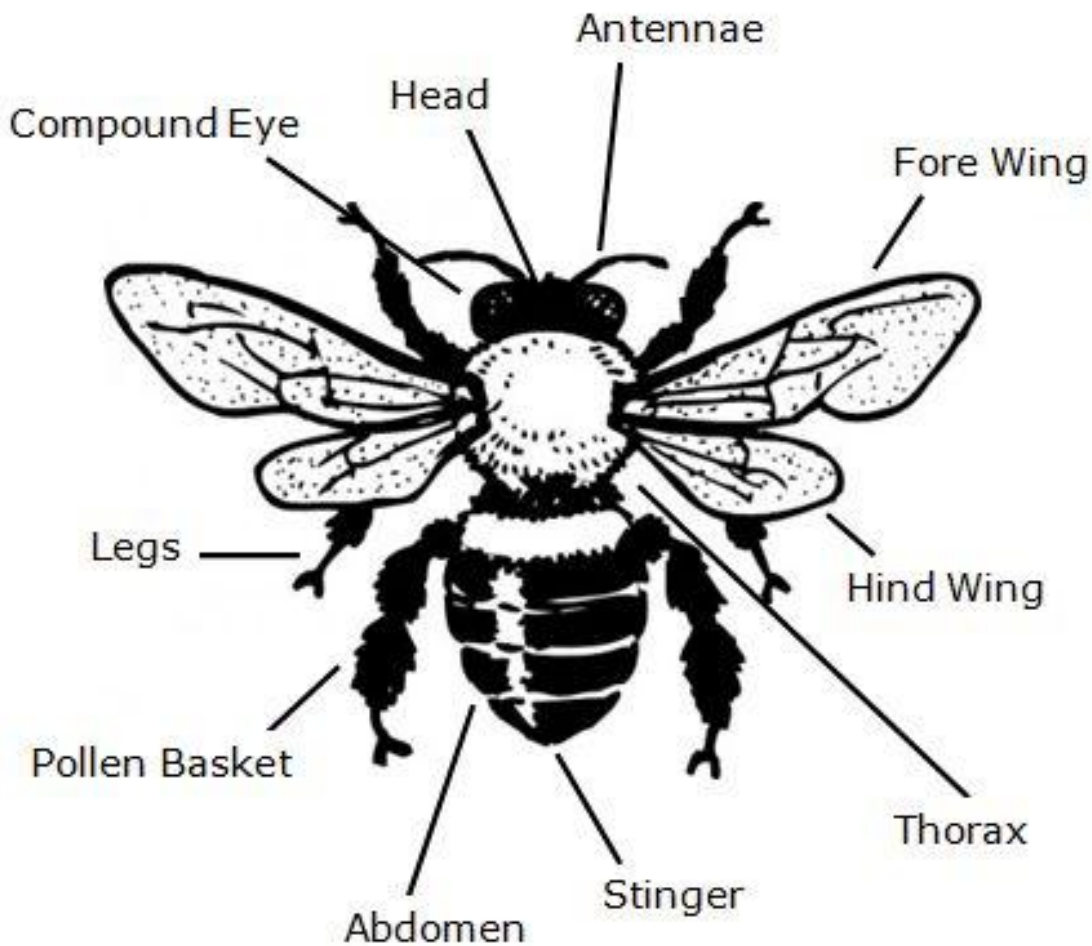


# Honey Bee Anatomy

Honey Bees are an important part of our environment. They play a vital role in pollinating plants, so the plants can reproduce (make more plants). The honey bees have specialized body parts that makes them perfect for their job. This diagram and following vocabulary list will help you learn more about them.



## Honey Bee Vocabulary

Abdomen - contains the digestive system organs and the heart. In a laying queen bee, the ovaries take up much of the abdomen

Antennae - “feelers” on the top of the honey bee head covered with sensor cells for smell and touch

Compound Eye – multifaceted eye that allows the honey bee to see in all directions at once

Fore Wing and Hind Wing – Honey bees have 2 pairs of wings that hook together during flight to form a single surface, but separate when not in flight.

Head – contains the brain, compound and simple eyes, antennae and mouthparts

Legs – Honey bees have 6 jointed legs that can both grab or stick to surfaces.

Pollen Basket – area on the rear legs of the honey bee where pollen is collected

Proboscis (not shown) – long tongue used to drink nectar from flowers

Stinger – Honey bees are usually not aggressive and only use the stinger for defense.

Thorax – legs and wings are connected here, mostly contains muscles used for flight

# Label Your Own Honey Bee



# Honey Bee Anatomy Quiz

1. This honey bee body part is collects pollen from flowers:  
a) proboscis                      b) pollen basket                      c) thorax
2. The wings and legs of the honey bee connect here:  
a) thorax    b) antennae                      c) abdomen
3. Honey bees have 6 of these that allow the bees to grab surfaces:  
a) wings    b) compound eyes                      c) legs
4. This allows honey bees to drink nectar from flowers:  
a) antennae                      b) proboscis                      c) pollen basket
5. The digestive organs and heart of the honey bee is found here:  
a) abdomen                      b) head                      c) thorax
6. These help the honey bee smell and touch:  
a) legs                      b) antennae                      c) stinger
7. The honey bee uses this for defense:  
a) fore wings                      b) stinger                      c) head
8. True or False. The honey bee is aggressive.
9. True or False. Honey bees can see all directions at once.
10. True or False. Honey bees drink nectar from flowers.